

# Genuine accessories

for the R-Class



Mercedes-Benz

## CONTENTS

### EXTERIOR

*Light-alloy wheels | Wheel accessories | Styling accessories* \_\_\_\_\_ **04**

### TELEMATICS

*iPod® integration | Navigation | Telephony* \_\_\_\_\_ **12**

### INTERIOR

*Interior appointments | Child safety* \_\_\_\_\_ **20**

### CARGO & CARE

*Carrier systems | Load compartment accessories* \_\_\_\_\_ **26**

### COLLECTION

*Mercedes-Benz Collection* \_\_\_\_\_ **34**









*Light-alloy wheels*  
*Styling accessories*  
*Wheel accessories*

# EXTERIOR



# Roadshow

Your reasons for choosing a Mercedes-Benz R-Class may be totally rational. But that doesn't mean you won't find yourself eagerly counting the hours until your next drive.

A word of caution: the light-alloy wheels shown here could just heighten that sense of anticipation and set your pulse racing.

So perhaps we should point out here that light-alloy wheels from Mercedes-Benz cover a far greater distance in test kilometres than required by law. Just in case you want to justify your next decision in rational terms.



Sadalmelik | 5-spoke wheel

**incenio** light-alloy wheel

48.3 cm (19 inch) | Finish: sterling silver

Wheel: 8.5 J x 19 ET 64 | Tyre: 255/50 R19  
B6 647 4379

Option for rear axle:

Wheel: 9.5 J x 19 ET 64 | Tyre: 285/45 R19  
B6 647 4380; flaring for wide-base tyres B6 647 0152 required  
(see right-hand page)



Angetenar | 6-spoke wheel

**incenio** light-alloy wheel

45.7 cm (18 inch)

Finish: titanium silver, high-sheen

Wheel: 8 J x 18 ET 67 | Tyre: 255/55 R18  
B6 647 4298



Situla | 5-spoke wheel

**incenio** light-alloy wheel

48.3 cm (19 inch) | Finish: sterling silver

Wheel: 8 J x 19 ET 67 | Tyre: 255/50 R19  
B6 647 4299



10-spoke wheel

43.2 cm (17 inch) | Finish: titanium silver

Wheel: 7.5 J x 17 ET 56 | Tyre: 235/65 R17  
B6 647 1839



10-spoke wheel

45.7 cm (18 inch) | Finish: titanium silver

Wheel: 8 J x 18 ET 67 | Tyre: 255/55 R18  
B6 647 1833



5-twin-spoke wheel

50.8 cm (20 inch) | Finish: silver, high-shine

Wheel: 8.5 J x 20 ET 60 | Tyre: 265/45 R20  
B6 647 1836



Alanz | 5-twin-spoke wheel

**incenio** light-alloy wheel

50.8 cm (20 inch) | Finish: sterling silver

Wheel: 8.5 J x 20 ET 61 | Tyre: 265/45 R20  
B6 647 4213



10-spoke wheel

48.3 cm (19 inch) | Finish: titanium silver

Wheel: 8 J x 19 ET 67 | Tyre: 255/50 R19  
B6 647 1834



5-spoke wheel

48.3 cm (19 inch) | Finish: titanium silver

Wheel: 8 J x 19 ET 67 | Tyre: 255/50 R19  
B6 647 1835

On all light-alloy wheels,  
use wheel bolt B6 647 0159  
and the corresponding  
rim lock B6 647 0155

Light-alloy wheels are  
supplied without tyres,  
wheel bolts or hub caps

**Flaring for wide-base tyres**

In accordance with  
ECE standard for  
standard-specification  
tyres. Discreet flaring  
strip. To be painted in  
body colour by dealer

EXTERIOR



**10-spoke wheel**

45.7 cm (18 inch) | Finish: himalayas grey

Wheel: 8 J x 18 ET 67 | Tyre: 255/55 R18

B6 647 4285



**5-twin-spoke wheel**

45.7 cm (18 inch) | Finish: titanium silver

Wheel: 8 J x 18 ET 67 | Tyre: 255/55 R18

B6 647 4286



**5-spoke wheel**

48.3 cm (19 inch) | Finish: titanium silver

Wheel: 8 J x 19 ET 67 | Tyre: 255/50 R19

B6 647 4203

With mixed-size tyres:

Wheel: 8.5 J x 19 ET 64 | Tyre: 255/50 R19

B6 647 4375

Option for rear axle:

Wheel: 9.5 J x 19 ET 64 | Tyre: 285/45 R19

B6 647 4376; flaring for wide-base tyres B6 647 0152 required

Finish: chromed (not pictured)

Wheel: 8 J x 19 ET 67 | Tyre: 255/50 R19

B6 647 4208



**7-spoke wheel**

43.2 cm (17 inch) | Finish: titanium silver

Wheel: 7.5 J x 17 ET 56 | Tyre: 235/65 R17

B6 647 4247; not in conjunction with R 500







**AMG 5-spoke wheel | Style III**  
53.3 cm (21 inch) | Finish: titanium silver  
Wheel: 9 J x 21 ET 60 | Tyre: 265/40 R21  
B6 603 1204  
Option for rear axle:  
Wheel: 9 J x 21 ET 48 | Tyre: 265/40 R21  
B6 603 1205



**AMG 5-spoke wheel | Style VI**  
50.8 cm (20 inch) | Finish: titanium grey,  
high-sheen  
Wheel: 8.5 J x 20 ET 60 | Tyre: 265/45 R20  
B6 603 1476

**AMG 5-spoke wheel | Style VI**  
50.8 cm (20 inch) | Finish: silver,  
high-sheen  
Wheel: 9 J x 20 ET 60 | Tyre: 265/45 R20  
B6 603 1474

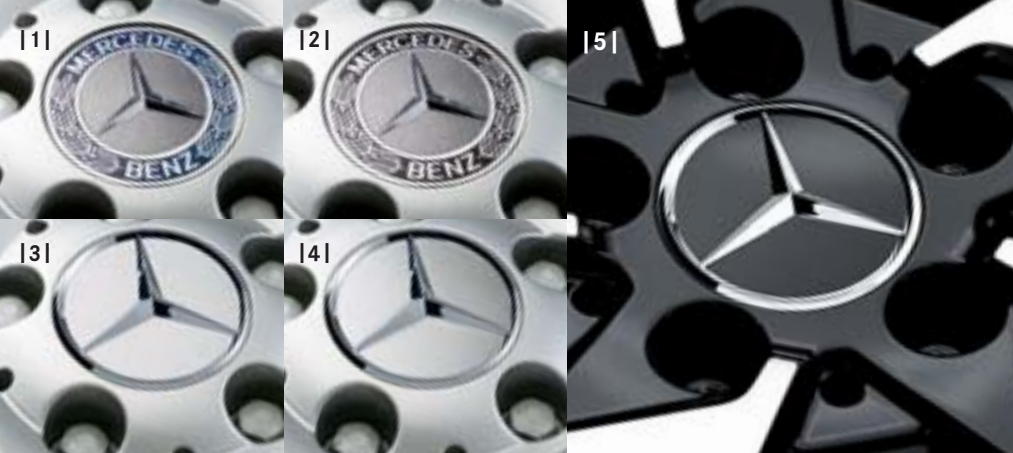
On all light-alloy wheels,  
use wheel bolt B6 647 0159  
and the corresponding  
rim lock B6 647 0155

Light-alloy wheels are  
supplied without tyres,  
wheel bolts or hub caps

**Flaring for wide-base tyres**  
In accordance with ECE standard  
for standard-specification tyres.  
Discreet flaring strip. To be painted  
in body colour by dealer

*Light-alloy wheels*

EXTERIOR



**Hub caps**

Protect the hub from dirt. Available in the following versions:

- 1 | Classic Roadster design in blue
- 2 | Classic Roadster design in black
- 3 | Sterling silver with chrome star
- 4 | Titanium silver with chrome star
- 5 | Black with chrome star

**Snow chain systems**

The RUD-matic snow chain can be fitted and removed quickly. With extra-reinforced chain links for the toughest conditions and excellent traction on snow and ice, it is a reliable companion on wintry roads. Your Mercedes-Benz partner will be happy to advise you on this and other snow chain systems



**Rim locks**

Set consisting of coded key and one lock per wheel



**Valve caps**

Wheel bolts  
| not pictured |

**Tyre pressure gauge**

Compact design. Saves readings. Suitable for all tyre valves (including cycle tyres). Keeping tyres at the optimum pressure saves fuel and reduces tyre wear. Supplied with leather pouch



**High-sheen chromed door handle recesses**

Round off your R-Class's chrome finish and protect the paintwork from scratches





**Roof spoiler**

Elegantly elongates the roof line of your R-Class

*Door handle recesses*  
*Hub caps*  
*Rim locks*  
*Roof spoiler*  
*Snow chains*  
*Tyre pressure gauge*  
*Valve caps*  
*Wheel bolts*

# EXTERIOR







*Multimedia  
Navigation  
Telephony*

# TELEMATICS



## Road movie

How do you turn the inside of your car into your own personal cinema? Or an office? Or a concert hall?

Questions which this section addresses in innovative style: with cutting-edge technology, designed to integrate seamlessly into the on-board electronic systems in your R-Class. And to blend just as seamlessly into the safety concept of your Mercedes-Benz – which means, for example, that the monitors for the Rear Seat Entertainment System are crash-tested.

If you do have any further questions about any of the technical details, your Mercedes-Benz partner will be happy to provide specific information for your particular vehicle model.



### Rear Seat Entertainment System

This high-performance DVD system allows the rear passengers to watch DVDs, look at their favourite pictures and even play video games on two superb 17.8 cm LCD colour screens, without disturbing the driver or restricting the rear field of vision. The system's separate DVD players mean that rear-seat passengers have the option of watching a different video source on each screen, allowing each to select their own individual entertainment. The USB and SD card interfaces allow other storage media to be used too. The system is designed to be retrofitted in your R-Class – no factory-fitted pre-installation required.

A separate video cable allows videos from various video sources (e.g. camcorder, iPod video, iPhone or video player) to be played on the Rear Seat Entertainment System via the AUX connection



A range of multimedia connections, 2 sets of infrared headphones and a remote control – the Rear Seat Entertainment System offers everything you need for in-car entertainment

TELEMATICS

### Mercedes-Benz iPod® Interface Kit<sup>1</sup>

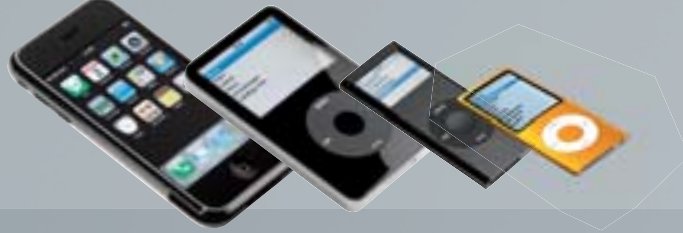
It's easy to control your iPod via the multifunction steering wheel: scroll through the menus [A], adjust the playback and volume [B] and display the artist/title of your choice in the instrument cluster [C].

As with the Mercedes-Benz Media Interface, the connection for your iPod is in the glove compartment. Your iPod's battery is charged while it is connected. No factory-retrofitted optional extra required

### Mercedes-Benz iPod® Interface Kit, Video

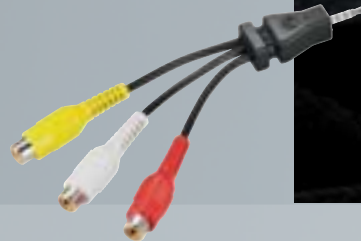
Full functionality as for iPod Interface Kit, with the additional option of watching videos on your COMAND system's display (when vehicle is stationary only). Only in conjunction with COMAND (Code 527 or Code 512)

*The iPod® Interface Kit is compatible with the following models: iPod from 4th generation | iPod video | iPod photo | iPod U2 | iPod mini | iPod nano 1st, 2nd, 3rd and 4th generations | iPod classic | iPod touch 1st and 2nd generations | iPhone 1st generation and 3G*



### Media Interface video cable<sup>1</sup>

Transforms your Mercedes-Benz into a cinema: the Media Interface video cable allows you to watch videos on the monitor of your COMAND APS – while the vehicle is stationary. Various video sources (e.g. camcorder, iPod video, iPhone, video player, etc.) can be connected to the Media Interface via the AUX connection | only in conjunction with Media Interface, Code 518 |



<sup>1</sup> The Mercedes-Benz Interface Kit allows you to listen to the music on your iPhone. It does not support the phone function



## Mercedes-Benz Bluetooth® telephone module

The telephone module is designed to extend the mobile communication system in your Mercedes-Benz. Just connect it to your Convenience Telephony system (Code 386) in the centre armrest, and start using your mobile via the on-board hands-free system. You can leave your mobile phone in your jacket pocket.

Advantages of the Bluetooth (SAP) telephone module:

- Access to contact details saved on SIM card
- Optimum reception quality as a result of using vehicle's external aerial
- Read and receive text messages
- The closed box features an integral USB port which can be used to charge the mobile phone

Two versions of the Mercedes-Benz Bluetooth SAP<sup>2</sup> telephone module are available: one in the form of a closed box [pictured] and the other with a corded handset [not pictured]. Both versions feature a SIM card reader



<sup>2</sup> SAP (SIM Access Profile) allows the module to read your mobile phone's SIM card

## Mobile-phone holders

When it comes to selecting a mobile for your Mercedes-Benz, you've never had so much choice. One "click" is all it takes to replace the system's "intelligent" mobile-phone holder. It takes a matter of seconds and is as straightforward a process as inserting the mobile into the holder itself.

Changing your mobile and even alternating between different models of mobile no longer presents a problem. There are no compromises when it comes to convenience-enhancing telephone technology either.

Other advantages of the holder:

- Optimum reception quality as a result of using vehicle's external aerial
- Mobile's battery is charged
- Access to internal phone memory
- Convenient operation using multifunction steering wheel

To use a mobile-phone holder, your car must be factory-fitted with optional extra **Code 386, Convenience Telephony**. Holders are available for many popular models of mobile phone

For further information about using the phone while in your car, go to [www.mercedes-benz.com/connect](http://www.mercedes-benz.com/connect) or ask your Mercedes-Benz partner for a copy of one of our Mercedes-Benz telematics brochures



Holders are available for:

- 1 | **Nokia** (6303i, E71, E66, 6700 classic, 6500 classic, 6300, 3109, 3110, 6310, 6310i)
- 2 | **Apple** (iPhone 3G, iPhone 3GS)
- 3 | **BlackBerry** (9700 Bold, 9000 Bold, 8900 Curve, 8300 Curve, 8310 Curve, 8320 Curve)
- 4 | **Sony Ericsson** (C902, C702, K800i, K810i, W880i)



TELEMATICS

Bluetooth® telephone module  
iPod® Interface Kit  
Media Interface video cable  
Mobile-phone holders





#### COMAND APS with 6-DVD changer

The new COMAND APS now offers even more convenience and freedom when you're on the move. Your route is navigated with impressive speed, thanks to the integral hard drive. Up to 4 GB of memory offers virtually unlimited space for your favourite music. COMAND APS also plays back music from DVDs and CDs, and from SD memory cards. And the optional Media Interface also allows you to connect your portable music player. For convenience and enhanced safety, all of these functions can be controlled via your COMAND system.

Other features: Bluetooth connectivity, 17.7 cm colour display, dynamic route guidance (RDS/TMC), double-tuner radio with 4-channel amplifier for outstanding sound, DVD changer controls. Also available without DVD changer as an option



#### SD memory card

The COMAND APS in your R-Class features a slot for SD memory cards. Use the SD memory card as a convenient way to play music



### *Rediscover navigation*

*In recent years integral navigation has made journeys more relaxed, less time-consuming and, above all, safer. If you want to continue to enjoy these advantages to the full, we recommend that you regularly replace the navigation DVD in your navigation system with the latest version. Ensuring that the data you're using matches the roads you're travelling on. And that the only surprises you encounter during your journey are of a pleasant nature*



**Europe navigation DVD  
for COMAND APS**

**Europe navigation DVD  
for Audio 50 APS**

*The data for the Mercedes-Benz navigation systems is regularly updated. Please ask your Mercedes-Benz partner for the latest navigation DVDs*

### **Audio 50 APS with 6-DVD changer**

Navigation system and car hi-fi combined in one unit. Dynamic route guidance using free traffic information via RDS/TMC. Navigation arrows shown on 12.5 cm TFT colour display. Audio part equipped with double-tuner receiver for FM, MW, LW and SW, 4-channel amplifier, CD slot for audio CDs or navigation CD plus CD changer controls. Can be operated via the multifunction steering wheel | not pictured |

### **Audio 20 CD with 6-CD changer**

Double-tuner radio with 14.7 cm colour display. Bluetooth interface with hands-free function. CD changer is MP3-compatible | not pictured |

*Audio 20 CD  
Audio 50 APS  
COMAND APS  
Europe navigation DVDs  
SD memory card*

TELEMATICS

A close-up photograph of a Mercedes-Benz illuminated door sill panel. The panel is made of a brushed metal material and is mounted on a dark, textured plastic door sill. The words "Mercedes-Benz" are embossed on the metal panel in a blue, sans-serif font. The lighting is dramatic, highlighting the metallic texture and the blue glow of the text.

Mercedes-Benz

*Child safety*  
*Interior appointments*



# INTERIOR

# Relax!

The R-Class is one of the most relaxing cars on the road today – thanks to the series of comfort-enhancing features we gave your Mercedes-Benz. This section highlights various individual ways to increase that stress-free sensation: with products that feel good in your hands, are kind to your back or help you feel refreshed.

You will also find details of the child safety systems from Mercedes-Benz. Because nothing helps you unwind more than the knowledge that your youngsters are in safe hands.



## Back cushion

Ergonomic, individually adjustable cushion, designed to support the back on long journeys. Available in anthracite



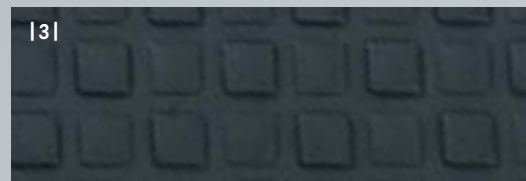
## Coat hanger

Robust coat hanger made from chromed metal. Easy to fit to the front head restraints. The ideal way to transport items of clothing without creasing them



## Wood/leather steering wheel

burr walnut, black  
Wood/leather steering wheels are also available in other colours to match the interior





#### Illuminated door sill panels

The blue illuminated Mercedes-Benz lettering is activated every time you open the door to get in or out. These illuminated door sill panels, in ground stainless steel, are a further “highlight” of the R-Class



AMG door sill panels, illuminated  
Brushed stainless steel



AMG door sill panels, not illuminated  
Brushed stainless steel

AMG door pin  
AMG door sill panels  
AMG floor mats

Back cushion  
Coat hanger  
Cup holder  
Door sill panels  
Floor mats  
Wood/leather steering wheel

#### AMG floor mats

With embroidered AMG lettering



#### AMG door pin

In high-quality chromed aluminium



- 1 | CLASSIC rep floor mats
- 2 | CLASSIC velour floor mats
- 3 | CLASSIC all-season floor mats

Durable, hardwearing materials. Available in various colours to match the interior. Can be clip-fastened to the floor of the vehicle to prevent slipping

#### Cup holder

For the second row of seats. Holds two drinks and has space for additional items | not pictured |

# INTERIOR



*Mercedes-Benz child seats are available with automatic child seat recognition as an option. If your car also has automatic child seat recognition, the technology automatically deactivates the front passenger airbag when a child seat with automatic child seat recognition is installed on the front passenger seat. All child seats are also suitable for use in vehicles without ISOFIX attachment points.*

*For further information on the Mercedes-Benz child safety range, ask your Mercedes-Benz partner for a copy of our separate brochure*

#### **Vario bag**

Plenty of extra stowage space for the really important things in life. Available in “DaimlerSquare” fabric



#### **“DUO plus” child seat**

Optimum safety for children between the ages of around 8 months and 4 years (9 to 18 kg). Fitted as standard with top tether, an additional belt for securing the head section, a height-adjustable shoulder belt and ventilation channels. With automatic child seat recognition and ISOFIX attachment points. Adjustable tilt. Removable, washable “DaimlerSquare” cover



#### **“BABY-SAFE plus” child seat**

Deep, moulded seat design offers extra side-impact protection for optimum safety. Special padding, designed to protect particularly vulnerable body areas of children up to around 15 months (up to 13 kg). Removable, washable “DaimlerSquare” cover



*Child seats  
Vario bag*

**“KidFix” child seat**

Booster seat for optimum side-impact protection, with height-adjustable backrest. The “KidFix” seat is attached using the 3-point seat belt and ISOFIX attachment points. Available with automatic child seat recognition as an option. For children between the ages of around 3.5 and 12 (15 to 36 kg). Removable, washable “DaimlerSquare” cover

INTERIOR





2 ▶

*Carrier systems*  
*Load compartment accessories*

# CARGO & CARE



# On the Road again

Few cars can rival the Mercedes-Benz R-Class's impressive ability to combine ride comfort with practicality. This section focuses on products which are designed to help you make even more individual use of the flexible transport options your R-Class offers. For even more comfort and convenience on board.



| 1 |

| 2 |



## Mercedes-Benz roof boxes

Elegant, aerodynamic design, made for your Mercedes-Benz. High-quality, extremely durable material. Boxes open on both sides for convenient loading and unloading

### 1 | Mercedes-Benz roof box 450

family box | Capacity approx. 450 litres. Opens on both sides. Available in black metallic and silver metallic. Optional accessories: luggage set and ski rack insert

### 2 | Mercedes-Benz roof box 330

sports box | Capacity approx. 330 litres. Opens on both sides. Available in titanium metallic and matt silver. Optional accessories: luggage set and ski rack insert

### Luggage set | for Mercedes-Benz roof box 450 |<sup>3</sup>

Four bags, designed to make perfect use of the space available in the roof box 450. Made from hardwearing, water-repellent polyester. Plus two matching ski bags, each designed to hold max. two pairs of skis. Ski bag also available separately | pictured above left |

### Luggage set | for Mercedes-Benz roof box 330 |<sup>4</sup>

Four bags made from hardwearing, water-repellent polyester. Tailored to the dimensions of the roof box 330 | not pictured |

### Ski rack insert | for Mercedes-Benz roof box 450 |<sup>3</sup>

A secure hold for up to five pairs of skis, subject to ski geometry | pictured above right |

### Ski rack insert | for Mercedes-Benz roof box 330 |<sup>4</sup>

A secure hold for up to three pairs of skis, subject to ski geometry | not pictured |

<sup>3</sup> Also suitable for previous XL model which opens on one side

<sup>4</sup> Also suitable for previous L model which opens on one side





*Basic carrier bars  
Luggage set  
Roof boxes  
Ski rack insert  
Transport bag*

#### **Alustyle basic carrier bars**

The Alustyle system opens up a wealth of flexible options when it comes to transporting sports equipment and luggage. Simply combine the Alustyle basic carrier bars with a variety of different roof-mounted carriers which you can see here and on the following pages. The basic carrier bars are precisely tailored to the body of your R-Class, ensuring the highest degree of safety and optimum aerodynamics

#### **Transport and stowage bag**

Robust bag, made from a high-quality nylon fabric. Protects the basic carrier bars and makes it easier to transport them



# CARGO & CARE



### New Alustyle bicycle rack

Depending on the permissible roof load, up to four bicycle racks can be fitted per pair of basic carrier bars. Each bicycle rack can hold one bicycle with a max. frame diameter of 98 mm (circular frame tubes) or 110 x 70 mm (oval frame tubes). The support frame folds down when not in use, reducing drag when travelling without cycles. Cycles can either be attached to the rack once it has been fitted to the roof or before it is fitted

### Coil lock

Designed to help prevent theft. Available as an option for the bicycle rack

### Rear-mounted bicycle rack for trailer coupling

The rear-mounted bicycle rack is easy to attach to the trailer coupling. A simple fold-down mechanism (see below) means that the load compartment can still be opened. Basic version for two cycles. Lockable  
Available as an option: extension kit for a third cycle (pictured far right)

*The laden bicycle rack can be pivoted downwards, allowing the load compartment to be opened*

*When the rear-mounted bicycle rack is unladen, simply fold down the vertical retaining bar to access the load compartment. This function also allows space-saving stowage of the rack when removed*



### Adapter

For trailer with 7-pin plug

### Extension kit for rear-mounted bicycle rack

Allows you to add a third cycle





*Adapter  
Bicycle rack  
Coil lock  
Rear-mounted bicycle rack  
Ski/snowboard rack*

**New Alustyle ski and snowboard rack "Comfort"**

For up to 6 pairs of skis or 4 snowboards. Lockable. Practical pull-out function makes loading and unloading easier

**New Alustyle ski and snowboard rack "Standard"**

For up to 4 pairs of skis or 2 snowboards. Lockable



# CARGO & CARE





#### Safety tow rod

2-piece steel rod with patented connector and cotter pin. For trailer couplings and towing eyes. Approved for vehicles with a gross vehicle weight of up to 3.2 t

#### Tie-down strap

Even heavy objects can be secured in place easily using this strap

#### Fluorescent jackets

Already compulsory in many countries, the bright orange and yellow fluorescent jackets with reflective stripes are conspicuous even in the dark. Pack of two



#### Shallow boot tub

Simple to clean. Non-slip thanks to PP-Flex material. Suitable for transporting foodstuffs | pictured above |

#### Deep boot tub

The hygienic way to transport items in the load compartment. Suitable for transporting foodstuffs | not pictured |



#### Luggage nets

Available for the side of the load compartment, the rear bench seat and the floor of the load compartment. Prevent lightweight objects from sliding around during your journey





#### Partition net

Separates the load compartment from the passenger compartment



#### Non-slip mat

black | Non-slip mat made from oil and acid-resistant polyester. Designed to fit the contours of the load compartment

#### Shopping crate

anthracite | Collapsible | pictured left |

#### Luggage-securing feature

Ingenious solution to the problem of luggage sliding around in the load compartment. Attaches securely around the object in question thanks to Velcro fastening | pictured left |

#### Concertina load sill protector

Protects bumper and load sill from scratches | pictured left |

#### Charger with trickle charge function

With its cutting-edge technology, the Mercedes-Benz charger ensures the longest possible battery life. Available in a 3.6 amp version and a 25 amp version | not pictured |

#### Coolbag

black | Fabric outside, plastic liner inside. Outside pockets offer plenty of room for extra items. Capacity: 12 litres. 12V connection. Adjustable carrying strap

#### Coolbox

black/grey | Hard case with fabric cover featuring pockets for extra items. Cold/hot switch. Capacity: 24 litres. 12V connection. Adjustable carrying strap

#### Rectifier

Allows the coolbox and the coolbag to be connected to a 230V socket at home



# CARGO & CARE

Load compartment accessories







*Mercedes-Benz Collection*

# COLLECTION

# R around the clock

R-Class drivers stand out from the crowd – with a distinctive car that oozes independent appeal and confident style. What could be more natural than to choose personal accessories that reflect those same cherished attributes?

For example a timelessly elegant watch.



## Men's cap

Black cotton. Topstitching and underside of peak in white. Embroidered logo



## Men's Business chronograph watch

Simple, elegant Business chronograph watch. Tested to 5 ATM. Screw back, engraved with Mercedes-Benz. 3D star logo inset in dial. Stainless steel case and stainless steel buckle. Hardened, anti-reflective mineral crystal | pictured left |

## Women's Business watch

Women's three-hand watch. Elegant Business style with simple hands and hour markings. Tested to 5 ATM. Screw back, engraved with Mercedes-Benz. 3D star logo inset in dial. Stainless steel case and stainless steel buckle. Hardened, anti-reflective mineral crystal | pictured right |



### “R” key ring

Key fob with split ring, central element and brass articulated link. The fob is a replica of the lettering found on the rear of the vehicle. High-quality, high-shine polished finish. 3D star logo badge inset in link. 3 small split rings for quick removal of keys | pictured on page 34/35 |



### Scarf

100% silk scarf. Made in Italy. Design: maritime motifs combined with classic elements such as chains and anchors



### Guest umbrella

Umbrella with aluminium shaft and fibre glass ribs. Water-repellent, dirt-repellent canopy with special Teflon® coating. Silver-coloured reflex piping all round. Hand-friendly plastic grip. Safety runner with button. Closed approx. 75 cm. Diameter when open approx. 130 cm. Colour: black. Silver-coloured logo print



### Men's polo shirt

Merцерised cotton. Embroidered logo on front. Black. S - XXL

### Women's piqué polo shirt

Women's classic, fitted polo shirt. 95% cotton/5% elastane. Piqué. Ribbed collar. Button band with 5 press-studs. Mercedes-Benz logo embroidered on front. White. XS - XL

*Guest umbrella*

*Men's Business chronograph watch*

*Men's cap, black*

*Men's polo shirt*

*“R” key ring*

*Scarf*

*Women's Business watch*

*Women's piqué polo shirt*

COLLECTION

# Genuine accessories for the R-Class

Further colour variants for individual products can be found in the separate price list for this brochure

<sup>1</sup> To be painted by your Mercedes-Benz partner

Description	p	Item no.
<b>Adapter</b>	30	A000 821 1656
<b>Alustyle basic carrier bars</b>	29	B6 781 2110
<b>AMG door pin, round</b>	23	A000 766 0228
<b>AMG door sill panels, blue illumination</b> (brushed stainless steel, set of 4, long wheelbase)	23	B6 602 1033
<b>AMG door sill panels, not illuminated</b> (brushed stainless steel, set of 4, long wheelbase)	23	B6 602 1052
<b>AMG floor mats (LHD, complete set, long wheelbase)</b>	23	B6 603 7120
<b>AMG light-alloy wheels</b>	09	from page 09
<b>Audio 20 CD with 6-CD changer</b>	19	on request
<b>Audio 50 APS with 6-DVD changer</b>	19	on request
<b>"BABY-SAFE plus" child seat</b> (with automatic child seat recognition)	24	A000 970 1000
<b>Back cushion</b>	22	A000 970 0690
<b>Charger (3.6 amp, ECE version)</b>	33	B6 754 2028
<b>CLASSIC all-season floor mats (black, set of 4)</b>	23	B6 668 0222
<b>CLASSIC rep floor mats (black, set of 4)</b>	23	B6 636 0379
<b>CLASSIC velour floor mats (black, set of 4)</b>	23	B6 629 4162
<b>Coat hanger</b>	22	A000 814 0132
<b>Coil lock (for New Alustyle bicycle rack, 3 mm, single)</b>	30	A000 583 1595
<b>COMAND APS with 6-DVD changer</b>	18	on request
<b>COMAND APS without DVD changer</b>	18	on request
<b>Concertina load sill protector (black)</b>	33	A212 680 0246
<b>Coolbag</b>	33	B6 681 8725
<b>Coolbox</b>	33	A000 820 4206
<b>Cup holder</b>	23	B6 692 0121

Description	p	Item no.
<b>Deep boot tub (black)</b>	32	B6 668 0288
<b>"DUO plus" child seat</b> (with automatic child seat recognition)	24	A000 970 1100
<b>Europe navigation DVD for Audio 50 APS</b>	19	on request
<b>Europe navigation DVD for COMAND APS</b>	19	on request
<b>Extension kit for 3rd cycle</b>	30	B6 685 1113
<b>Flaring for wide-base tyres</b>	07	B6 647 0152
<b>Fluorescent jacket (orange)</b>	32	A000 583 0461
<b>Fluorescent jackets (pack of 2)</b>	32	A000 583 0361
<b>Guest umbrella</b>	37	B6 695 7540
<b>High-sheen chromed door handle recesses (set of 2)</b>	10	B6 688 1238
<b>High-sheen chromed door handle recesses (set of 4)</b>	10	B6 688 1237
<b>Hub caps (black with chrome star)</b>	10	B6 647 0200
<b>Hub caps (Roadster design in black)</b>	10	B6 647 0201
<b>Hub caps (Roadster design in blue)</b>	10	B6 647 0120
<b>Hub caps (sterling silver with chrome star)</b>	10	B6 647 0206
<b>Hub caps (titanium silver with chrome star)</b>	10	B6 647 0203
<b>Illuminated door sill panels</b>	23	on request
<b>"KidFix" child seat (with automatic child seat recognition)</b>	25	A000 970 1800 9G43
<b>Light-alloy wheels</b>	04	from page 04
<b>Luggage net, floor of load compartment</b>	32	B6 766 0109
<b>Luggage net, rear bench seat</b>	32	B6 766 0110
<b>Luggage net, side of load compartment</b>	32	B6 766 0107



Description	p	Item no.
<b>Luggage-securing feature</b>	33	A001 987 1414
<b>Luggage set</b> (for MB roof box models 330 and L)	28	A000 890 0411
<b>Luggage set</b> (for MB roof box models 450 and XL)	28	A000 890 0511
<b>Media Interface video cable</b> (ECE)	16	A001 827 8004
<b>Men's Business chronograph watch</b>	36	B6 695 5485
<b>Men's cap</b> (black)	36	B6 695 6460
<b>Men's polo shirt</b> (black)	37	B6 695 6360-6364
<b>Mercedes-Benz Bikes</b>	-	on request
<b>Mercedes-Benz Bluetooth telephone module, box</b> (SAP)	17	A212 906 8600
<b>Mercedes-Benz iPod Interface Kit</b> (with sound system)	16	B6 782 4503
<b>Mercedes-Benz iPod Interface Kit</b> (without sound system)	16	B6 782 4502
<b>Mercedes-Benz iPod Interface Kit, Video</b>	16	B6 782 4563
<b>Mercedes-Benz roof box 330</b> (matt silver, opens on both sides)	28	A000 840 3362
<b>Mercedes-Benz roof box 330</b> (titanium metallic, opens on both sides)	28	A000 840 3462
<b>Mercedes-Benz roof box 450</b> (black metallic, opens on both sides)	28	A000 840 3662
<b>Mercedes-Benz roof box 450</b> (silver metallic, opens on both sides)	28	A000 840 3562
<b>Mobile-phone holders</b> The range is being extended all the time. Please contact your Mercedes-Benz partner for details	17	on request
<b>New Alustyle bicycle rack</b>	30	A000 890 0293
<b>New Alustyle ski and snowboard rack "Comfort"</b>	31	B6 685 1703
<b>New Alustyle ski and snowboard rack "Standard"</b>	31	B6 685 1702
<b>Non-slip mat</b> (black)	33	B6 768 0060
<b>Partition net behind 2nd seat row</b>	33	B6 766 0099

Description	p	Item no.
<b>"R" key ring</b>	37	B6 695 7505
<b>Rear-mounted bicycle rack for trailer coupling</b> (ECE)	30	B6 685 1111
<b>Rear Seat Entertainment System kit</b>	15	on request
<b>Rear Seat Entertainment System video cable</b>	15	A212 827 0204
<b>Rectifier</b>	33	A000 982 0021
<b>Rim locks</b>	10	B6 647 0155
<b>Roof spoiler, primed</b> <sup>1</sup>	11	B6 688 1540
<b>RUD-matic snow chain, without grip links</b> (235/65 R17)	10	B6 755 0026
<b>RUD-matic snow chain, without grip links</b> (255/55 R18)	10	B6 755 0027
<b>Safety tow rod</b>	32	A000 890 0224
<b>Scarf</b>	37	B6 695 5451
<b>SD memory card</b> (ECE), COMAND APS	18	B6 782 3973
<b>Shallow boot tub</b> (black)	32	B6 668 0028
<b>Shopping crate</b>	33	B6 647 0995
<b>Ski bag</b> (single, for MB roof box models L and XL, 330 and 450)	28	A000 846 0806
<b>Ski rack insert</b> (for MB roof box models 330 and L)	28	A000 840 4718
<b>Ski rack insert</b> (for MB roof box models 450 and XL)	28	A000 840 4818
<b>Tie-down strap</b>	32	A000 890 0294
<b>Transport and stowage bag</b>	29	A000 890 0111
<b>Tyre pressure gauge</b>	10	B6 658 8140
<b>Valve caps</b>	10	B6 647 2001
<b>Vario bag, fabric: "DaimlerSquare"</b>	24	A000 899 1961
<b>Wheel bolts</b>	10	B6 647 0159
<b>Women's Business watch</b>	36	B6 695 5483
<b>Women's piqué polo shirt</b> (white)	37	B6 695 5419-5423
<b>Wood/leather steering wheel</b> (burr walnut, black)	22	on request

# INDEX

Please note: changes may have been made to the products since this brochure went to press (31.08.2010). The manufacturer reserves the right to make changes to the design, form, colour and specification during the delivery period, provided these changes, while taking into account the interests of the vendor, can be deemed reasonable with respect to the purchaser. Where the vendor or the manufacturer uses symbols or numbers to describe an order or the subject of an order, no rights may be derived solely from these. The illustrations may show accessories and items of optional equipment which are not part of standard specification. Colours may differ slightly from those shown in the brochure, owing to the limitations of the printing process. This brochure has been compiled by Daimler AG of Germany and is distributed internationally. It provides a general indication of the range of models, features, optional extras and/or colours available in various countries. Some of the models, features, optional extras and/or colours may not be available in your country or may only be available in a different specification. Additionally some models, features, optional extras and/or colours may only be available in combination with others. For current and more specific information in relation to the range of models, features, optional extras and/or colours available in your country, and their pricing, you should contact your nearest authorised Mercedes-Benz Passenger Car Dealer.